



## CASE STUDY YLEM ENERGY: CHP

### PROJECT

3 x 2MW combined heat and power

### LOCATION

Axbridge, Somerset

### CLIENT

YLEM Energy

### DURATION

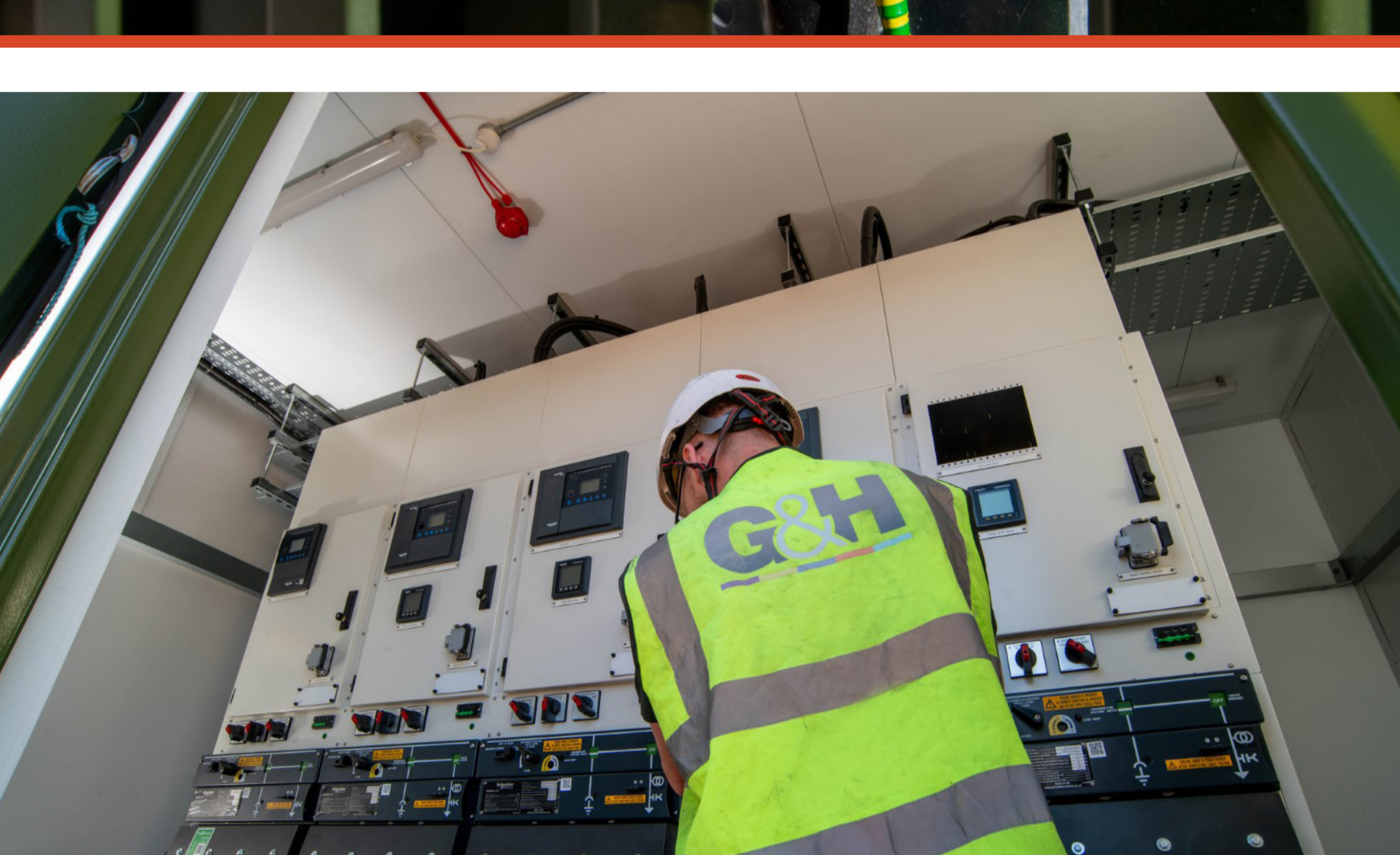
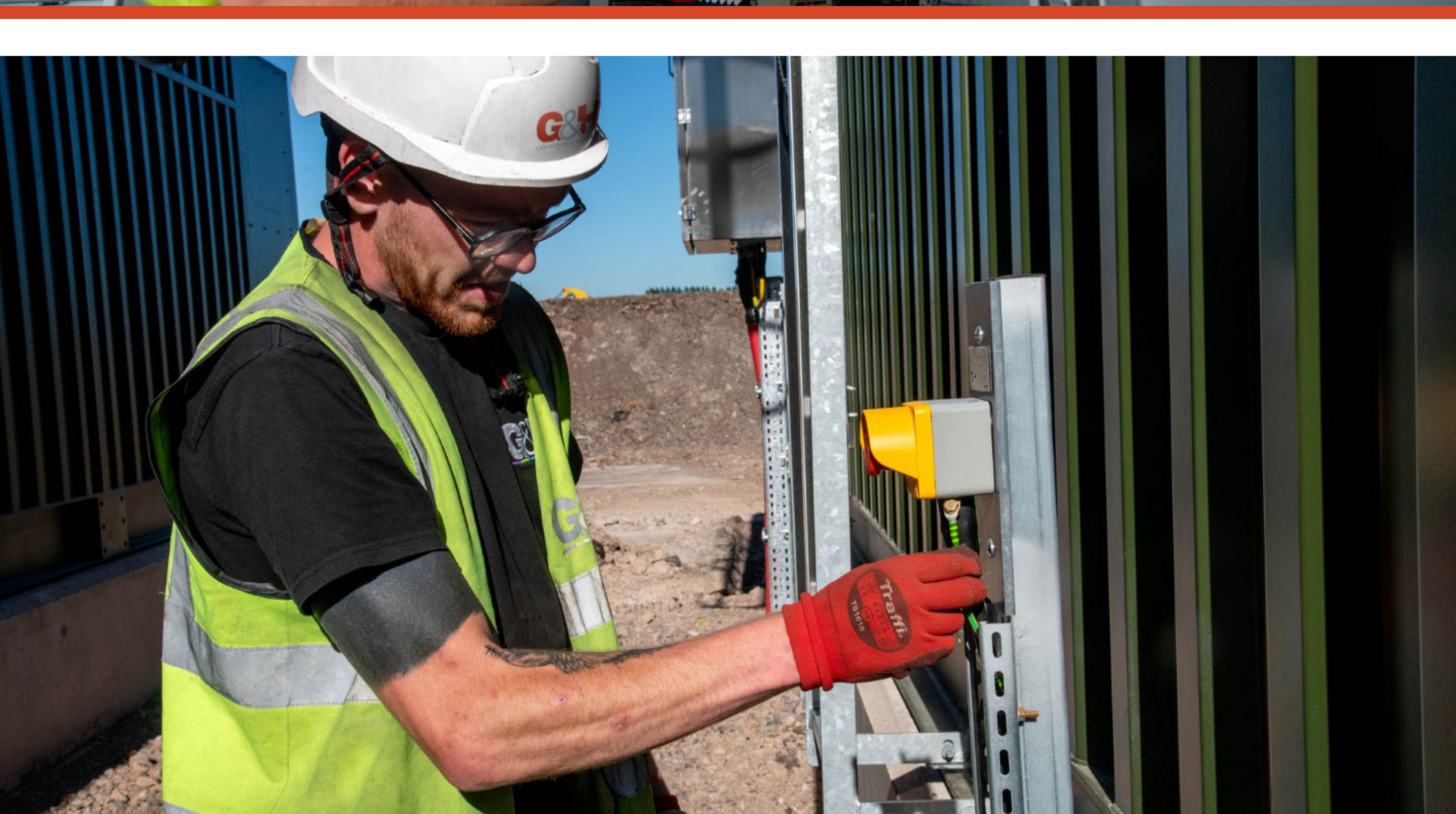
8 weeks

### FULL LV & HV

electrical installation

### DEFECT-FREE

installation



### KEY CONTACT

James Sherburn  
Engineering Services Director  
james.sherburn@gpbs.me  
0113 255 6433