

BENTLEY INDUSTRIAL ESTATE



KEY FEATURES

- Worked closely with the landlord of three separate industrial units to deliver separate PV systems to lower site wide energy usage
- Full DNO, Planning and Ofgem Coordination
- Provided bespoke energy monitoring system to allow web based viewing of the energy savings provided by the system
- Sequenced installation between three separate buildings on the same site to ensure the most efficient installation was achievable
- Assistance with end user billing provided to the Landlord

THE DETAILS

Project title:
Bent Ley Industrial Estate

Technology:
Solar PV (150kW)

Location:
Huddersfield

Services:
Design, Installation, Commission

Client:
Towndoor Properties Ltd

Tel: +44(0) 1132 255 6433

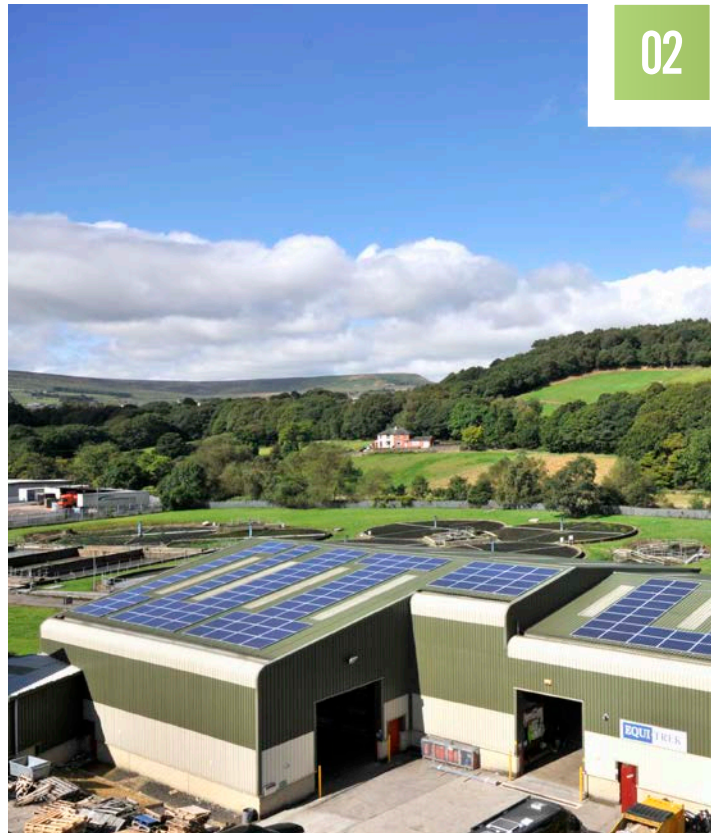
Web: www.ghsustainability.co.uk

THE BRIEF

G&H provided initial advice and analysis to the landlord of this industrial estate in Huddersfield to assist in the feasibility assessment of a large scale solar PV system being installed.

A full feasibility assessment was undertaken including a structural analysis, planning permission approval, DNO agreements in place and system design complete.

This enabled the client to make an informed decision to invest in his portfolio to reduce energy costs for the benefit of both their business and their tenants businesses.



OUR APPROACH

The industrial estate is a thriving and busy centre for business in the area and therefore organising the installation and co-ordinating deliveries was key to a successful installation

We provided a turnkey installation service that included establishing a site compound, delivery management to accommodate the tenants own business operations. G&H provided post installation assistance with ongoing tenant billing for the landlord.



KEY ACHIEVEMENT

Providing ongoing client assistance with multiple metering and billing issues to a successful resolution