

CASE STUDY - KIRKLEES COLLEGE ENGINEERING CENTRE



HEADLINES

2

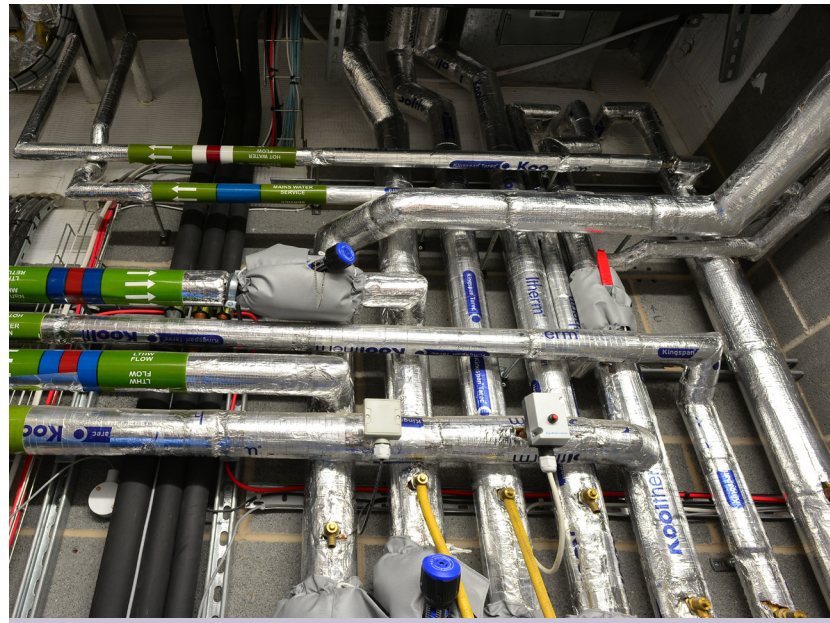
G&H divisions (Building Services & Sustainability) provided integrated services

30 WEEK

£1.6m programme reduced to just 20

WEEKEND

and night time working ensured deadline was met



KEY FACTS

Project title: Kirklees College
Engineering Centre
Location: Huddersfield
Client: GMI Construction
Services: Mechanical & Electrical

Contractor: GMI Construction
Value: £1.6M
Duration: 20 weeks
G&H divisions: Building Services and
Sustainability

CASE STUDY HOW WE DID IT



GMI Construction appointed us to undertake the complete design and build of M&E services at the new Kirklees Engineering College due to our proven record of delivering schemes under pressure to meet exacting deadlines and the capacity of our Building Services and Sustainability divisions to deliver integrated services.



Our in-house design team created a detailed programme of works to ensure we would meet the deadline that was reduced from 30 to 20 weeks.



To stay on programme we demonstrated great flexibility and worked out of sequence when required, for example, the flooring was not in place.

In this scenario we introduced an all-terrain lifter so the work could continue and other industrial plant machinery was introduced to help deliver ventilation systems, all while complying with health and safety legislation.

The workforce was also tasked with finding ways to speed up the works that included the installation of an electrical sub-main distributor, small power, lighting, gas, HVAC, domestic services, BMS and above ground drainage, while G&H Sustainability carried out the solar thermal installation.

The innovation, programme planning, ability to utilise G&H Building Services and G&H Sustainability's respective skillsets, and the workforce's commitment - that included a significant amount of weekend and late night working - was instrumental in the shortened deadline being met.



KEY CONTACT

David Davis
Pre-Construction Director
daviddavis@ghbs.me
0113 255 6433